



The 8th ESL IPB Summer Course
1-24 July 2024

ECOTOURISM, FOOD SECURITY AND NATURE CONSERVATION

**From the Mountain to the City then
to the Island' Sea and Beaches**



PROGRAM DESCRIPTION

As food scarcity grows, tourism may provide the demand and support required for food production and encourage tourism resorts to become more sustainable. However, tourism may also threaten food security and nature conservation.

This Summer Course -organized by Dept. of Resource and Environmental Economics (ESL) Faculty of Economics and Management (FEM), IPB University— aims to

- 1) discuss the trade-offs and synergies among nature conservation, tourism and food security;
- 2) equip participants with basic knowledge on methods on valuing environmental resources;
- 3) challenge participants' critical thinking on the course theme through **seven site visits** covering mountain, city park, small islands and marine ecosystems.



IPB University
— Bogor Indonesia —

IPB University, located in Bogor, Indonesia, is a prestigious institution renowned for its excellence in agriculture and natural resource sciences. Established in 1963, it has since evolved into a comprehensive university with a diverse range of academic programs spanning agriculture, forestry, fisheries, veterinary medicine, and environmental sciences.

With a commitment to research, innovation, and sustainable development, IPB University stands as a global leader in addressing critical challenges related to Agriculture, Ocean, Biosciences for a Sustainable World. Its dedication to nurturing future leaders and advancing knowledge makes it a key player in Indonesia's educational landscape and a hub for impactful research at the global scale



IPB PROFILES

34392

STUDENT BODY

345

INTERNATIONAL STUDENT

1 434

FACULTY STAFFS

306

PROFESSORS

995

STUDENT INBOUND

328

STUDENT OUTBOUND

1 601

STAFF INBOUND

501

STAFF OUTBOUND

555

PARTNERSHIP

41

RESEARCH CONSORTIA

24

EDUCATION CONSORTIA

21

INTERNATIONAL
ACCREDITATION



#489 GLOBAL

QS WUR 2024



#106 ASIA

QS WUR 2024



#51 GLOBAL

QS WUR 2024 by Subject Agriculture
and Forestry



#7 ASIA

QS WUR 2024 by Subject Agriculture
and Forestry



#1 Southeast Asia

QS WUR 2024 by Subject Agriculture
and Forestry



#1201-1500

THE World University Ranking 2024



#401-500

THE Asia University Rankings 2023



#101-200

THE Impact Rankings 2023



#1

THE Impact Rankings: Decent work
and Economic Growth 2023



#9

THE Impact Rankings: No Poverty
2023

ABOUT ESL FEM



The Department of ESL offers the study of economics and social aspects of agriculture, natural resources, and the environment as well as their impacts on the society. As part of the Faculty of Economics and Management IPB, the department is primarily aimed at addressing the global need for sustainable development and improving the awareness of government agencies, societies, and business entities on the importance of resource and environmental sustainability.

The major competency requires students to be able to appropriately apply relevant theoretical concepts and formulate policies in the fields of agricultural, resource, and environmental economics. In general, academic programs at the ESL department concern with theoretical frameworks and issues related to natural resource management, environmental policies and agricultural development.

THE 8TH ESL IPB SUMMER COURSE 2024: PROGRAM OPTIONS AND COURSE FEE

Summer Course with Excursion

(3 SKS program = 135 learning hours),
the options are:

1) **4D4N program**

IDR 2,200,000 (domestic) or USD 160 (international)

Package include: three-night accommodation in Sentul, one night accommodation in The Thousand Islands, six meals, one seafood BBQ dinner, bus and ferry boat transportation from hotel to excursion sites, transportation from hotel to IPB campus, airport pick up on Sunday 7 July (afternoon/evening arrival), entrance tickets to excursion sites.

2) **4D1N program**

IDR 750,000 (domestic) or USD 60 (international)

Similar package to the 4D4N program **excludes** the 3 night Sentul accommodation, airport pick up and transportation from hotel to campus.

Summer Course without Excursion

(2 SKS Program = 90 learning hours),
the options are:

1) **Hybrid** with one day offline course in IPB Dramaga: IDR 100,000 (include 3 meals)

2) **Full online** : FREE of charge, applicable for international students and non-Jabodetabek domestic students ONLY.

PROGRAM ITINERARY

Mon-Fri 1-5 July: Pre-course guidelines, pre-departure briefing and competition guidelines, courses and trainings. ALL ONLINE.

Sun 7 July: Foreign participants arrival, airport pick up, drop off at Bell's Place Hotel Sentul

Mon 8 Jul: Opening ceremony, cultural day and in class lectures in IPB Dramaga Campus, Bogor

Tue 9 July: Excursions to Gunung Mas, Batik village and Bogor Botanical Garden

Wed-Thu 10-11 July: Excursion to The Thousand Islands Regency

Thu 11 Jul : sea-crossing ferry ride back to Jakarta (evening)

Fri-Mon 12-15 July: Individual and group online works to complete assignments

Tue 16 July: Photography and learning journal assignment submissions

Tue 16-18 July: Assignment review

Wed 17 July: Vlog and short essay assignment submissions

Thu-Fri 18-19 July: International competition and workshops on assignments

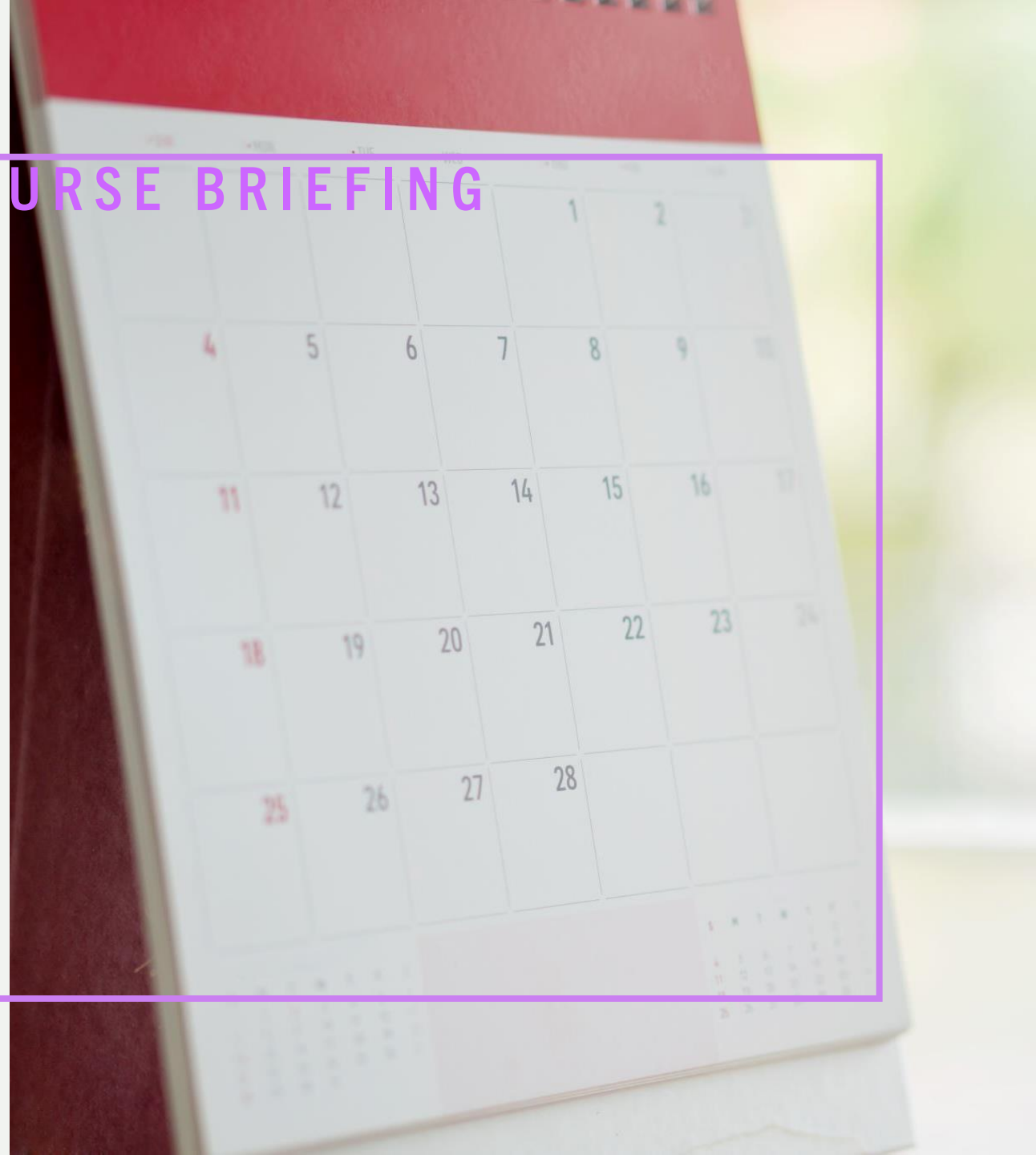
Mon 22 July: Assignment re-submissions (Finalists only)

Wed 24 July: winner announcement and closing ceremony

ONLINE LECTURES AND COURSE BRIEFING

1-5 JULY 2024

- Two sessions per day
- World class lecturers and trainers include Prof. Andre Renzaho (WSU), A/Prof. Zulfan Tadjoeddin (WSU), Dr. Taida Tarabula (Warsaw Univ.) and Prof. Akhmad Fauzi (IPB)
- List of other lecturers/trainers to be confirmed soon.



Distinguished Professor Andre Renzaho

Position

Distinguished Professor of Humanitarian and Development Studies, School of Medicine



Biography

Professor Renzaho held a future fellowship between 2013 and 2017 and is a Professor of Humanitarian and Development Studies, Western Sydney University. He joined the university in 2015 and prior to that he was the Director of Migration, Social Disadvantage, and Health Programs within the Global Society Unit, the Department of Epidemiology & Preventive Medicine, Monash University. With a background in Global Health and International Development, he has professional experience in complex (protracted) humanitarian emergencies and development practice, international public health, and nutrition epidemiology including the epidemiology of non-chronic diseases and cardiovascular diseases among migrant populations. From 2003 to 2006, he oversaw the evaluation of more than 40 AusAID NGO Cooperation Programs with World Vision Australia covering Sub-Saharan Africa, Eastern Europe, the Middle East, Latin America, the Pacific, and Asia; and acted as the Technical Director of the Impact Assessment of Australian Aid for the Bougainville Infrastructure. He has worked with a number of United Nations including working with Care Australia, Concern Worldwide, Médecins Sans Frontières, the United Nations High Commission for Refugees, and the United Nations Children's Fund. Professor Renzaho has also undertaken consultancy work for State and Commonwealth Governments in Australia and has been a member of a number of governmental and non-governmental Boards, Committees, Expert Panels, and Taskforce. He is on editorial boards of international journals and currently a Chief Investigator on category 1 grants. He has published more than 150 papers and attracted more than \$5.5 million in national competitive grants.



Associate Professor Zulfan Tadjoeddin

Associate Professor in Development Studies,
Humanitarian & Development Studies



WESTERN SYDNEY
UNIVERSITY

Biography

Contact

Publications

Projects

Supervision

Teaching

Media

Biography

Dr Tadjoeddin is Associate Professor in Development Studies at Western Sydney University. He had visiting research appointments at the Queen Elizabeth House (QEH) of the University of Oxford (UK) and at the International Institute of Social Studies (ISS) of Erasmus University Rotterdam (The Netherlands); was a Technical Advisor on decentralization and conflict at the United Nations Development Programmes (UNDP) in Indonesia; was a Researcher at the UN Support Facility for Indonesian Recovery (UNSFIR-UNDP) and World Agroforestry Centre (ICRAF).

His areas of research include political economy of development, employment and labour market as well as poverty and inequality. Has published two books, both by Palgrave Macmillan: *Explaining Collective Violence in Contemporary Indonesia: From Conflict to Cooperation* (2014) and *Employment and Reindustrialisation in Post Soeharto Indonesia* (2018). His articles have appeared in leading academic journals, such as *Journal of Development Studies*, *Oxford Development Studies*, *Journal of East Asian Studies*, *Journal of Peace Research*, *Journal of International Development*, *Economic and Labour Relations Review*, and *Journal of the Asia Pacific Economy*.

He has consulted for Asian Development Bank (ADB) and various UN agencies such as FAO, ILO, UN-ESCAP, UNICEF, and UN-OHRLLS. His expert commentaries have been cited by media outlets such as *The Economist*, *The Diplomat*, *World Finance*, and *ABC News*.

OPENING CEREMONY AND EXCURSIONS

8-11 JULY 2024

Day/Date	Venue	Transportation mode	Dress code*
Mon 8 Jul	IPB Campus Dramaga	Bus	Traditional/ national costume
Tue 9 Jul	Puncak Tea Bridge Batik Village Bogor Botanical Garden	Bus	Red
Wed 10 Jul	Tidung Besar Island Payung Besar Island Payung Kecil Island Tidung Kecil Island	Bus, Ferry boat and small boat	Morning: yellow/cream/light brown Evening: floral/beach/hawaiian theme
Thu 11 Jul	Tidung Besar Island Tidung Kecil Island	Ferry boat and Bus	White/blue/pink/peach/pastel colour

*expected, but not mandatory



MON 8 JULY OPENING CEREMONY + CULTURAL DAY

06.00-07.00: Bell's Place Hotel to IPB Dramaga

07.00-08.00: Dramaga campus tour

08.00-08.30: Breakfast

08.30-09.45: Lecture 1

09.45-10.00: Coffee Break

10.00-12.30: Opening Ceremony, Keynote
Speeches and Cultural Performances

12.30-13.30: Lunch Break

13.30-14.45: Lecture 2

14.45-16.00: Lecture 3

16.00- IPB Dramaga to Bell's Place Hotel

TUE 9 JULY
GUNUNG MAS/PUNCAK TEA PLANTATION
+ BOGOR BOTANICAL GARDEN (BBG)

- 06.00-07.00: Sentul/Bogor– Gunung Mas
(Puncak)
07.00-09.00: **Excursion at Gunung Mas Tea
Bridge**
09.00-11.30 Excursion at Batik Village
11.30-13.30 Puncak - BB), lunch at Raasaa
13.30-16.30 Excursion at BBG
16.30 Off to Hotel, resting, packing and
prepare for next day





WED 10 JULY: TIDUNG AND PAYUNG ISLANDS EXCURSIONS AND SNORKELING

05.15-07.15: Sentul to Wharf 16 Marina Ancol, Jakarta

08.00-10.00: Ferry boat to Tidung Island

10.00-10.30: Cottage/resort check in

11.00 : Catching boat at the Love Bridge, ride to Payung islands

11.00-14.00: Lunch at Asha Beach Club, water sport at Asmara Lagoon

14.00-17.00 : Excursion and snorkelling at Payung Kecil and Tidung Kecil Islands, boat ride back to the Love Bridge

17.00-18.00 Enjoying sunset at Love Bridge

18.00-19.00: Resting at cottage/resort,

19.00 - 21.00 Wrapping up the day and discussion, BBQ Dinner party on the beach, games and social time





THU 10 JULY: TIDUNG ISLANDS TOUR

05.30-06.30 Catching sunrise at the Love Bridge

06.30-08.00 Biking around the island

08.00-09.30 Breakfast at Mutiara Tidung resort

09.30-10.00: Crossing to Tidung Kecil Island

10.00-10.30: Mangrove planting

10.30-12.30: Visiting sperm whale museum, turtle and clown fish conservation, agrotourism Bald Sukun at Tidung Kecil island

12.30- 14.00 Lunch

14.00-14.45 Hotel check out

15.00-17.00 Ferry boat ride to Marina Ancol Jakarta

17.00 : Bus ride to Jakarta International Airport to drop those who needs to catch the night flight, continue to IPB Dramaga campus to drop local participants

BENEFITS (1)

- Flexible learning options (online/hybrid, a/synchronous)
- Adjusted online lecture schedules to accommodate international students from extremely different time zones
- Credit earning certificate:
 - 3 SKS** (equivalent to 135 learning hours) for Summer Course with excursion.
 - 2 SKS (equivalent to 90 learning hours) for Summer Course without excursion.

**SKS is Indonesian credit point system for higher education. One SKS is equal to 45 learning hours. One learning hour = 50 minutes.





IPB University
— Bogor Indonesia —

Certificate of Credit Earning Activities

is awarded to

Siaw Shin Yee

who has successfully completed
the 7th ESL IPB International Summer Course in
*Sustainability, Community Development and
Natural Resource Management (IPB 301)*,

with a focus theme on

“Reducing Carbon Footprints: Lessons Learned For Post COVID-19 World”

This course was held from 1/8/2023 to 18/8/2023

and organized by the Department of
Resource and Environmental Economics (ESL),
Faculty of Economics and Management (FEM), IPB University

Head of Department of Resource
and Environmental Economics,
FEM, IPB University

Dr. Adi Hadiano, S.P., M.Si.

Dean of Faculty of Economics and
Management, IPB University

Dr. Irfan Syauqi Beik, S.P., M.Sc.Ec.

**Reducing Carbon Footprints:
Lessons Learned For Post Covid-19 World**

Siaw Shin Yee

University Putra of Malaysia

The student is entitled to earn credits in
Indonesian Credit System, for having invested approximately
136 learning hours in this course that equals to

three (3) credits

With the academic grade of

A

The course contents cover the following topics with corresponding activities:

1. Recording learning progress through Learning Journal
2. Greenhouse gas emission in agriculture sector
3. Poverty and environmental sustainability in rural regions
4. Plastic waste trade and carbon footprints
5. Renewable energy and its impact on the carbon emissions reduction
6. Climate and disaster risk governance
7. Inside out measuring carbon footprints easily and accountably
8. Engaging environmental education and science communication through gamification
9. Using photography, videography and poster as useful tools to develop environmental awareness education contents
10. Sustainable tourism and green sociopreneurship: learning Bali's best practices in a three-days excursion
11. Sustainable waste management: excursion to Cibanteng low carbon village

Learning hours (LH) summary:

Activities	Unit	LH	Total LH
Lectures	13	2	26
Bali and Cibanteng village excursion	14	3	42
Independent study	10	2	20
Group tasks: short video, photography and poster	14	2	28
Individual task: learning journal	10	2	20

Total

136

Head of Department of Resource
and Environmental Economics,
FEM, IPB University

Dr. Adi Hadiano, S.P., M.Si.

Dean of Faculty of Economics and
Management, IPB University

Dr. Irfan Syauqi Beik, S.P., M.Sc.Ec.

Sample of
The 7th
ESL Summer
Course (2023)
Credit Earning
Certificate

BENEFITS (2)

Fun, easy but useful assignments

- Individual learning journal (100-150 words of your reflection on each lecture session)
- Group photography
- Group vlog
- Group short essay (1000 words) on your excursion experience

Automatic entry to ESL IPB Annual International Competitions:

- Learning Journal competition
- Photography competition
- Vlog competition
- Essay competition



ESL
SUMMER
COURSE
2023

Reducing Carbon Footprints:
Lessons Learned for Post COVID-19 World

CERTIFICATE OF ACHIEVEMENT

FOR **BEST GROUP PHOTOGRAPHY COMPETITION**

is proudly presented to:

Ashiegbu Nwakaego Gloria

Universiti Putra Malaysia

as

3rd Winner

Dean of Faculty of Economics and Management, IPB University



Dr. Irfan Syauqi Beik, S.P., M.Sc.Ec.

Supported by:

Direktorat
Pengembangan Masyarakat
Agromaritim

Sample of
Winner Award of
ESL International
Competition 2023

BENEFITS (3)

- Making new friends and global networking
- Decent accommodations: three nights mountain view hotel plus one night beachfront cottage.
- Great start to explore other famous tourist sites: Bali, Lombok, Yogyakarta, Labuan Bajo, Raja Ampat, etc.



Please bring small flag of your country, let's make cool group photo like this!



ACCOMMODATION 1
(3 NIGHTS):
BELL'S PLACE
HOTEL AND
ROOFTOP
RESTAURANT
AT SENTUL CITY

Surrounded with beautiful view;
three mountains in one frame (Mt.
Pangrango, Mt. Salak, Mt. Pancar).

Facilities:

- 42 guest rooms (twin & double)
- Swimming pool
- Rooftop Restaurant
- Pool front Cafe
- Bell's mart minimarket
- Mushala
- Meeting room
- 5.8 km/12-15 minutes from
AEON Mall Sentul City, the
largest mall in Bogor area



**SATU2NYA CAFE/RESTO ROOFTOP DI SENTUL,,
YANG DIAPIT 4 GUNUNG SEKALIGUS..!!?**





ACCOMMODATION 2
(1 NIGHT):

**PURI TIDUNG COTTAGE AND
MUTIARA TIDUNG RESORT**

AT TIDUNG BESAR ISLAND,
THE THOUSAND ISLANDS REGENCY
(BEACHFRONT ACCOMMODATIONS)



BENEFITS (4)

- Excursions to beautiful tourist sites: from the mountain's greenery to the colourful city botanical garden then to the toska crystal-clear seawaters and small islands' white sand beaches.
- Various outbound activities including tea-walk, Batik making, visiting orchid collection, IPB campus tour, sea crossing ferry ride to The Thousand Islands, hop on-off to small islands, swimming on the white sand beach, snorkelling, biking around small island, water sport (banana boat etc), mangrove planting, visiting sperm whale museum and turtle conservation, sea food barbeque dinner party on the beach, and many more.



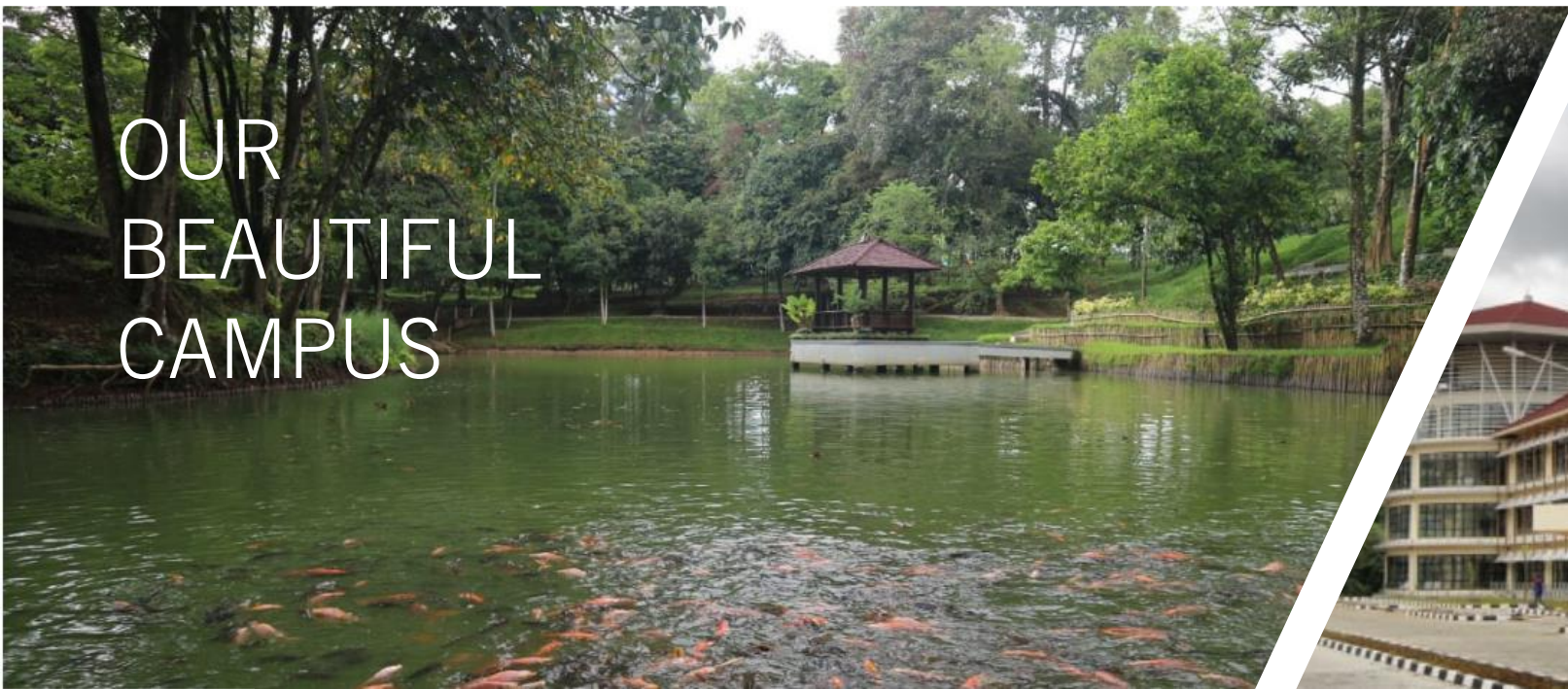


EXCURSION SITES

- IPB Dramaga Campus
- Tea Bridge at Puncak/Gunung Mas
- Batik Village at South Tugu, Puncak/Gunung Mas
- Bogor Botanical Garden
- Tidung Besar island
- Tidung Kecil Island
- Payung Besar Island
- Payung Kecil Island



WE HAVE PEACOCKS!



OUR
BEAUTIFUL
CAMPUS



LIBRARY



GUNUNG MAS/PUNCAK
TEA PLANTATION



BATIK MAKING



RAINBOW SLIDE
above the tea



BERSIH AMAN TERTIB INDAH KREATIF

PUNCAK CASE: Conservation vs Tourism

 **The Jakarta Post**
Still bold, fiercely independent



NEWS • CITY

Bogor fails to keep promises on Puncak preservation: Watchdog

Forest Watch Indonesia (FWI) says the Bogor regency administration lacks a commitment to protecting a conservation zone in Puncak, Bogor regency, West Java, alleging authorities have failed to follow up on promises to clear the area of illegal villas

Indra Budiari (The Jakarta Post)

Bogor • Mon, April 27, 2015

F

orest Watch Indonesia (FWI) says the Bogor regency administration lacks a commitment to protecting a conservation zone in Puncak, Bogor regency, West Java, alleging authorities have failed to follow up on promises to clear the area of illegal villas.

FWI coordinator Dwi Lesmana said that based on a recent FWI field investigation in Sukatani village, Puncak, four out of 27 villas in the conservation area demolished by the Bogor administration in 2013 have been rebuilt by owners.

He said one of the rebuilt villas was a five-story building, two floors of which have been finished.

'It is true that the villa owners committed a violation by building their villas in a conservation area, but so did the city administration, by failing to conduct strict supervision and spatial-planning enforcement,' Dwi said during a discussion in Bogor.

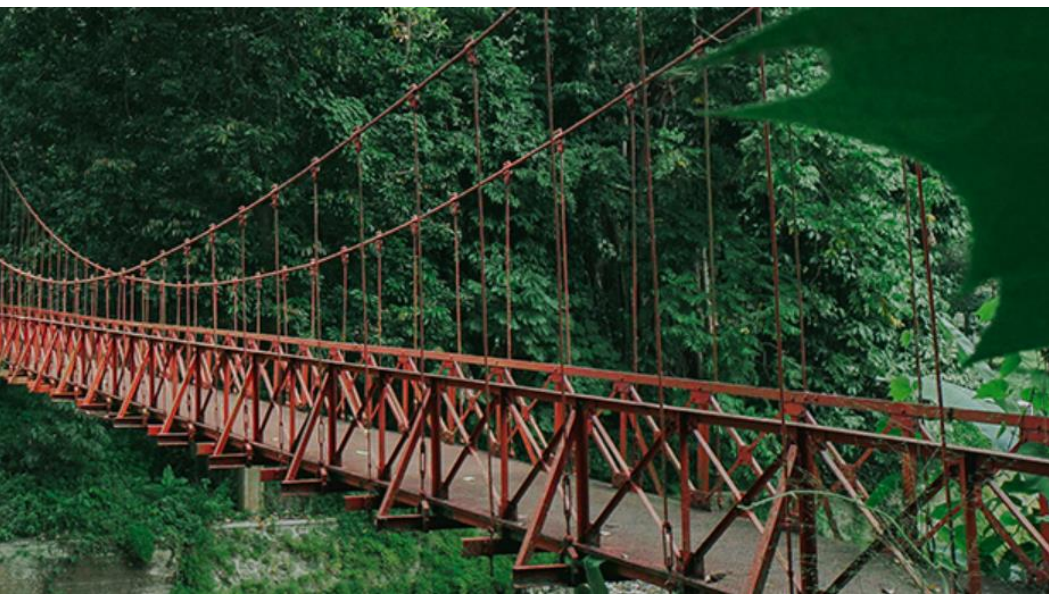
Puncak, which straddles Cisarua and Megamendung district in Bogor, plays an important role as a water-catchment area to lowland neighbors like Jakarta. However, with a large number of villas built into the hillside, the Ciliwung River ' which flows from Puncak ' often overflows and floods Jakarta during the rainy season.



BOGOR BOTANICAL GARDEN



PRESIDENTIAL PALACE



ORCHID HOUSE

Light exhibits at Indonesian botanic garden spark commercialization concerns

Ahmad Supardi,
Rahmadi Rahmad

2 years ago



Flowers in the Bogor Botanical Gardens. Image by Nick Botter/Flickr.

- *Established by the Dutch colonial government in the late 19th century, Indonesia's Bogor Botanical Gardens is one of the oldest and largest in the world.*

- *As one of the nation's most important scientific institutions, its formal functions are plant conservation, research, education, scientific tourism, and environmental services.*
- *To attract a wider range of visitors, decorative lighting installations and projections on trees have been installed as part of a new after-dark attraction.*
- *Several groups have criticized the lighting exhibits, including four former heads of the garden, who say they commercialize the site and detract from its scientific and educational mission in favor of profit and recreation.*

An hour's drive south of the Indonesian capital, Jakarta, set against the backdrop of the volcanic Mount Salak, lies Bogor, whose frequent rainfall — even during the dry season — has earned it the nickname “Kota Hujan” (Rainy City). In 1817, the Dutch colonial government decided this lush and fertile location was ideal for an experimental garden for crops such as coffee, tea, oil palm and the quinine-producing cinchona tree to be introduced to the then-Dutch East Indies.

After Indonesia declared independence in 1945, the new government developed the site into a botanical garden, heralding the birth of

organized botany in the young nation along with several other scientific institutions. Two centuries after its creation, covering an area of 87 hectares (215 acres) and containing more than 15,000 species of trees, 300 orchid varieties and 5,359 other plant species, Kebun Raya Bogor, the Bogor Botanical Gardens, is one of the oldest and largest in the world.

Earlier this year, the garden's managing body, the National Research and Innovation Agency (BRIN), in collaboration with private management company PT Mitra Natura Raya, installed an after-dark attraction at the garden, dubbed GLOW.

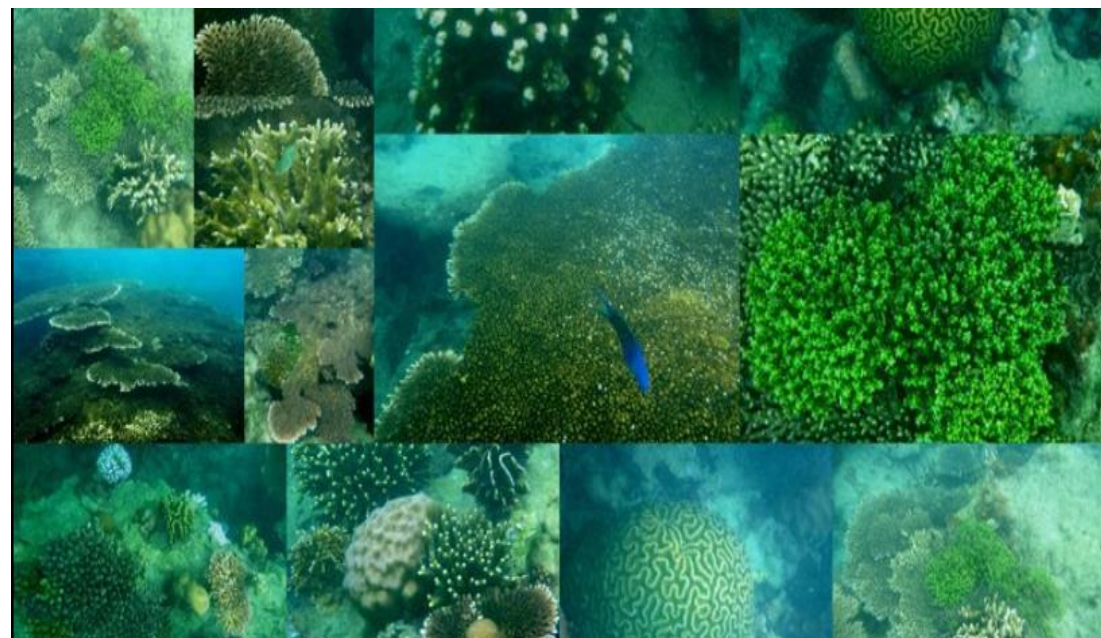
With the backing of two of Indonesia's biggest banks, it features decorative lighting exhibits and lighting projections on trees accompanied by music and narration. GLOW will “stimulate visitors' imaginations with fictional stories of nocturnal plants and animals,” according to its website. Other features include an illuminated ornamental waterwheel, water fountains, floating lights, selfie spots, and two large gates bearing the bank partners' logos.

Fearing that GLOW will commercialize the garden and detract from the institution's scientific and educational mission in favor of

BOGOR BOTANICAL GARDEN CASE: Conservation vs Tourism



The Thousand Islands Regency,
part of Jakarta Province



TIDUNG BESAR AND
TIDUNG KECIL ISLANDS,
home of Indonesia's largest collection
of coral reef (second to Papua)

TIDUNG ISLAND CASE: Conservation vs Food Security

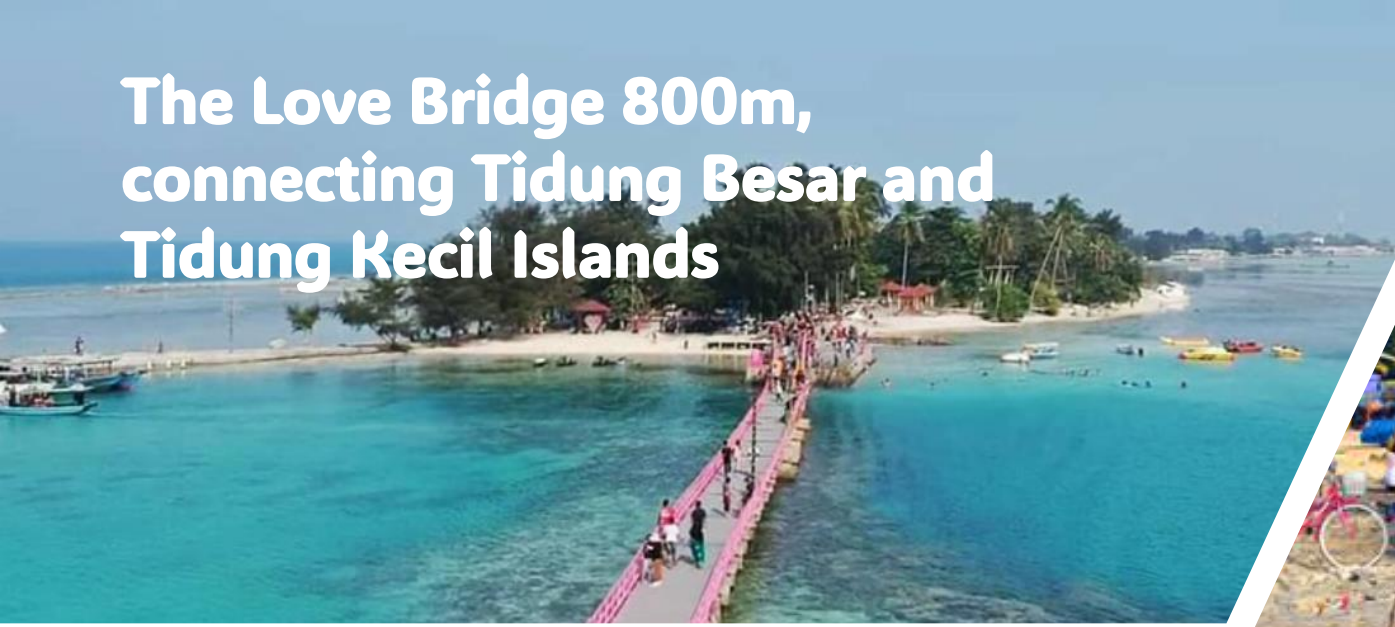


“Few years a go, I destroyed coral reefs just to get more and more fishes. Months after, I could not get any fishes. Then I realized that coral reef is the fishes’ house. If I destroy its house, the fishes will be gone. Since then, I initiated coral reef transplantation around Tidung islands, to secure our livelihood and source of foods.”

ERIK SUKARDI, Tidung Island Fisherman

FROM DESTROYER TO
PIONEER OF CORAL
REEF CONSERVATION

The Love Bridge 800m, connecting Tidung Besar and Tidung Kecil Islands



Water sport for hire at the Love Bridge: Banana Boat and Doughnut Boat



Mangrove Planting at Tidung Kecil Island





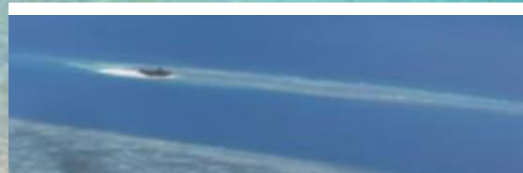
BIKING AROUND
THE SMALL ISLAND



SUKUN BOTAK,
TIDUNG'S NATIVE FOOD PLANT



PAYUNG BESAR
ISLAND



The Asmara
Lagoon



PAYUNG KECIL
ISLAND



PROVIDED MEALS DURING THE OFFLINE PROGRAM

	Breakfast	Coffee Break/Snack	Lunch	Dinner
Mon 8 Jul	Included	Included	Included	
Tue 9 Jul	Included (provided in the bus)		BYOF (Raasaa café and restaurant, Bogor Botanical Garden)	
Wed 10 Jul	Included (provided in the bus)		BYOF (Asha Beach Club, Payung Besar Island)	Included (Sea food BBQ dinner on the beach, Mutiara Tidung Resort)
Thu 11 Jul	Included (served at Mutiara Tidung Resort)		BYOF Love Bridge cafés and culinary centre, Tidung Besar Island	

BYOF = Buy Your Own Food

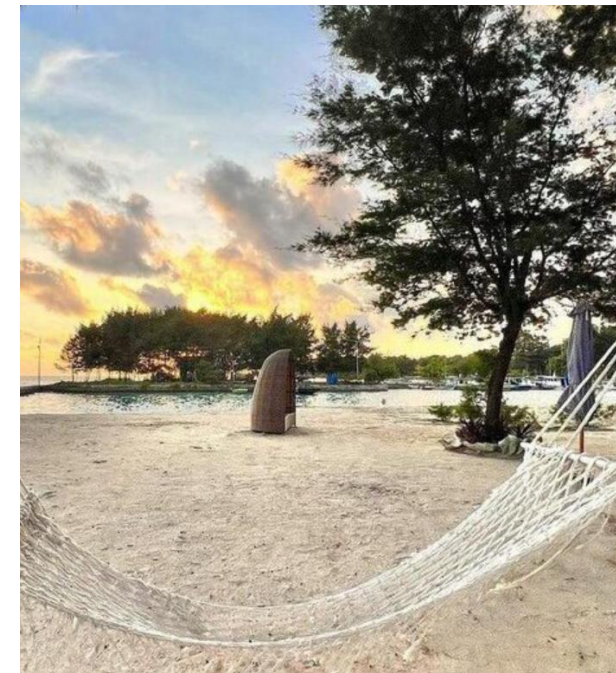


Social time and Seafood BBQ
dinner party on the beach
at Mutiara Tidung Resort
(free of charge, included in the excursion
program)





Salt Water Cures
All Wounds



ASHA BEACH CLUB and RESTAURANT at PAYUNG BESAR ISLAND





Raasaa, Legendary restaurant and café at Bogor Botanical Garden, on top of the hill facing green scenery and fountains

Indonesia President Jokowi and US President Barrack Obama having lunch here on 30 June 2017.



TRANSPORTATION

- Transportation from Jakarta Soekarno Hatta International Airport to Bell's Place Hotel at Sentul City will be provided for FREE for arrival during 12 PM - 6 PM on Sunday 7 July 2024
- Other option: take shuttle Airport (DAMRI Bus) to Sentul. It costs you around \$10/IDR 140k. The last stop is Aston Sentul Lake Resort & Conference Centre. From Aston, you can order online taxi to Bell's Place Hotel. Aston-Bell's Place = 7 km or 13 minutes driving, costs you around IDR 50-70k.
- IPB Main Campus is in Dramaga, Bogor Regency, around 80 km from Jakarta CBD and 100 km from Jakarta international Airport. Sentul city is located between Jakarta and Bogor, much closer to Bogor.
- Bus (return) transportation from Bell's Place Sentul hotel to IPB campus and all excursion sites is covered.
- Ferry boat (return) transportation from Marina Ancol Jakarta to Tidung Besar island and small boat to other small islands in the Thousand Islands regency are covered.
- NOT covered: bike rent in Tidung Island (IDR 15k per day), snorkeling gear rent (IDR 35-50k per person), water sport hire (Banana Boat, Doughnut Boat, Canoe).

- 2 hr 10...
- 21 hr
-
-
-
-

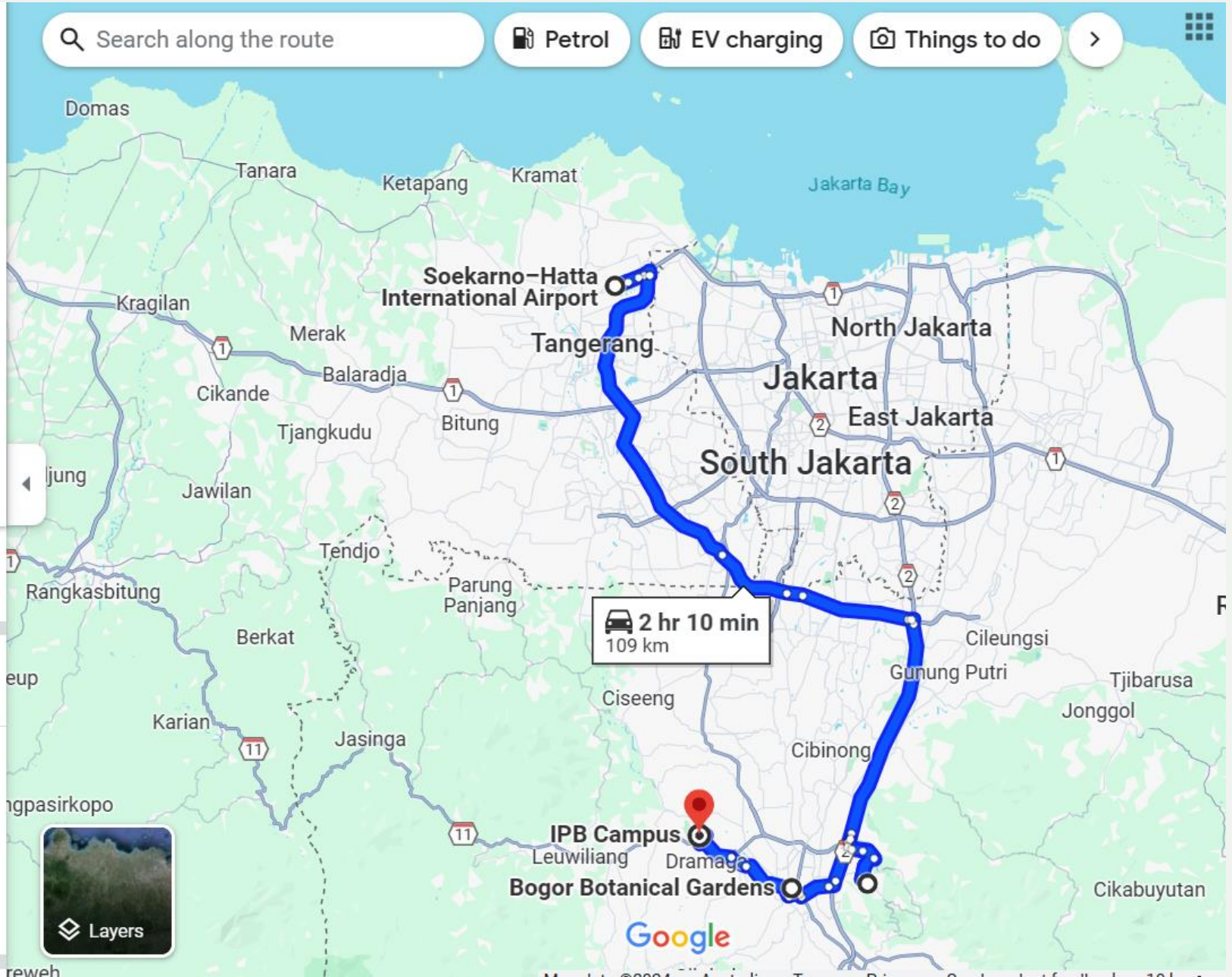
- Soekarno–Hatta International Airport
- Bell's Place Hotel and Rooftop Restaurant
- Bogor Botanical Gardens, Jl. Ir. H. Juanda
- IPB Campus, Jl. Raya Dramaga, Babakan,
- ⊕ Add destination

Options

Send directions to your phone Copy link

via Jl. Tol Lkr. Luar Jkt 2 2 hr 10 min
 2 hr 10 min without traffic 109 km
 ⚠ This route has tolls.

[Details](#)



DARE ENOUGH
TO JOIN US???

Register through

<https://ipb.link/reg-sc-esl2024>



Further inquiries?

Contact Dr. Meilanie Buitenzorgy
ESL IPB Summer Course Coordinator

meilanie@apps.ipb.ac.id

WhatsApp +6282298251107